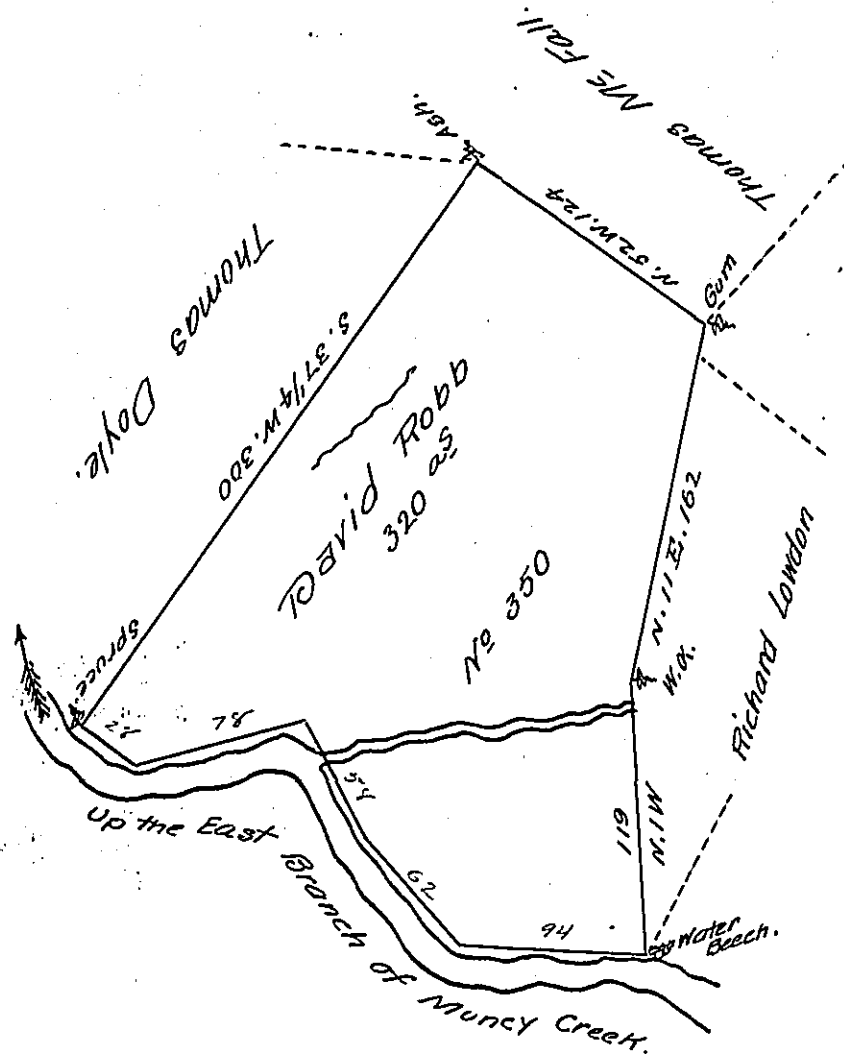


Beginning at the spruce  
thence up the creek  
S. 56 1/4 E. 28  
N. 78 3/4 E. 78  
S. 25 1/4 E. 58  
S. 4 1/2 E. 62  
S. 82 E. 94  
to a water  
tbl.!



Situate on the East Branch of Muncy Creek in Lycoming County Survey?  
on the 29 day of October 1800 by Order of the Board of Property for d. David Robb  
by virtue of his application No 350 bearing date the 3 day of April 1769 contain-  
ing three hundred and twenty acres with the usual allowance of Six P. Cent &c

Henry Donnel, D.S.

To Samuel Cochran, Esq.  
Surveyor General.

IN TESTIMONY that the above is a copy of the original remaining on file in  
the Department of Internal Affairs of Pennsylvania, made  
conformably to an Act of Assembly approved the 16th day of  
February, 1833, I have hereunto set my Hand and caused  
the Seal of said Department to be affixed at Harrisburg,  
this twenty eighth day of August 1906

*Loach B. Brown*  
Secretary of Internal Affairs.